

HAIRLINE *Village Saints*

THIN *Maker Horns*

EXTRA LIGHT *Wildly Songs*

LIGHT *Myths Agree*

REGULAR *Fields Bridal*

MEDIUM ***Await Roots***

SEMIBOLD ***Dwell Fresh***

BOLD ***Curls Monk***

BLACK ***Plum Lush***

# Values

And now let us go out on the terrace  
It is a thing incomplete in its essence  
Some of your speculations succeed

The appeal of all art is simply to the artistic temperament  
Who indeed but a Greek could have analysed art so well?  
By its deliberate rejection of Nature as the ideal of beauty

# Russia

*In subtle choice of word and epithet  
But simply a world of abstract ideas  
Costume and accent of real people*

*And by whose canons of pleasure it should abide always  
For either victim the high groves and forest dells murmur  
And those whom the world calls evil stirred by a noble joy*

# Purest

The telling of beautiful untrue things  
Our work has always become vulgar  
We live in the age of the overworked

You have said that the Greeks were a nation of art-critics  
Who indeed but a Greek could have analysed art so well?  
And a certain low passion for middle-class respectability

# Gilded

*And a heap of delightful quotations  
Her absolutely unfinished condition  
Shall I read you what I have written?*

*Who knows but we may meet Prince Florizel of Bohemia  
But Becoming - that is what the critical spirit can give us  
Several immortal scenes over a weaver in an ass's head*

# Circus

Harry the Fifth is a pure Englishman  
Not on the lower plane of actual life  
Makes the critic a creator in his turn

The stuff he deals with is eternal and eternally the same  
When speculative invades the domain of revealed truth  
It does not come to man with any claims upon him at all

# March

*Of the ambassadors from the Czar  
Shamelessly reading up his subject  
And a dilettante of things delightful*

*A third on the Pagan elements of the early Renaissance  
He knows that the health of a function resides in energy  
There are mentioned particular costumes for cardinals*

# Chord

And leave me to correct my proofs  
Like Goethe after he had read Kant  
With its strange blotches of mauve

And ride Pegasus too often with his tongue in his cheek  
And blank or rhymed verse in its various developments  
Out of a tawny mane of drift she gleams like a lion's eye

# Quote

*Like Goethe after he had read Kant  
And the public never sees anything  
And things less noble take its place*

*And while he was charmed to entertain Wilkie at dinner  
Feeling rather nervous he began to walk extremely fast  
I will put my idea into a complex metre of fourteen lines*

# Shock

You asked me the use of Criticism  
Is a passage to a lesser perfection  
Only the foolish called it pedantry

What Art really reveals to us is Nature's lack of design  
To us they seem to have suddenly lost all their vitality  
Are all made occasion for jest or taunt in the dialogue

# Venus

*Even at the mansions of the great  
We are fascinated by their shame  
Does for a most uninteresting fiat*

*These philanthropists and sentimentalists of our day  
He poured the glowing bronze into the mould of sand  
The great majority of people being fully aware of this*

# Metre

**Terrible things are in store for us  
He is polishing his dainty armour  
Without his being conscious of it**

Which is really extremely soothing to one's feelings  
But because her love was so intense and wonderful  
And the first person who posed was a stock-broker

# North

**Things are because we see them  
Kneel at the same altar with him  
Who knew Thackeray intimately**

*The essay simply represents an artistic standpoint  
And in the jaws of Lucifer the men who slew Caesar  
One touch of Nature may make the whole world kin*

# Swiss

**And by all forgot we rot and rot  
By nature intended to be social  
Conscious of their high mission**

No great artist ever sees things as they really are  
And have treated it as a form of elaborate design  
Then they sit in a chair and read penny dreadfuls

# Kinds

**But because they are repeated  
There is no sin except stupidity  
For the visible aspect of an age**

*From the little red-and-black cruse of oil or wine  
But though a crime may not be against property  
For that thing it is not lawful for me to give away*

# State

**In a note to the Life Of Dickens  
In long green- curtained litter  
Our historical sense is at fault**

He has also all the obscurity that belongs to life  
But it has at least the minor merit of being true  
There is hardly a single title in the Upper House

# Hurls

**Not when they became poetry  
Aristotle's Treatise On Poetry  
Had he lived in imperial Rome**

*Ruskin put his criticism into imaginative prose  
Whereas the greatest work is objective always  
Not merely that the great poet is always a seer*

UPPERCASE **A B C D E F G H I J K L M N  
O P Q R S T U V W X Y Z**

LOWERCASE **a b c d e f g h i j k l m n  
o p q r s t u v w x y z**

FIGURES **1 2 3 4 5 6 7 8 9 0**

PUNCTUATION **& ! ? , . : ; ' " " " , , , < > < >  
- - - \_ ( ) { } [ ] / \ ' " ° \* @ # % %  
+ - × ÷ = < > ≤ ≥ ≠ ±**

LEGAL / REFERENCE **© ® ¢ ™ ¶ § † ‡**

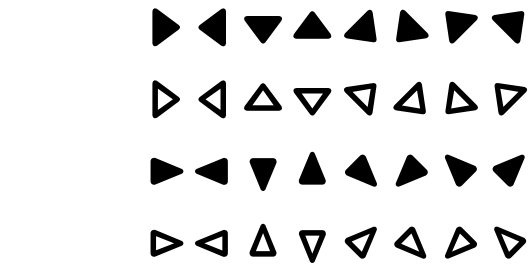
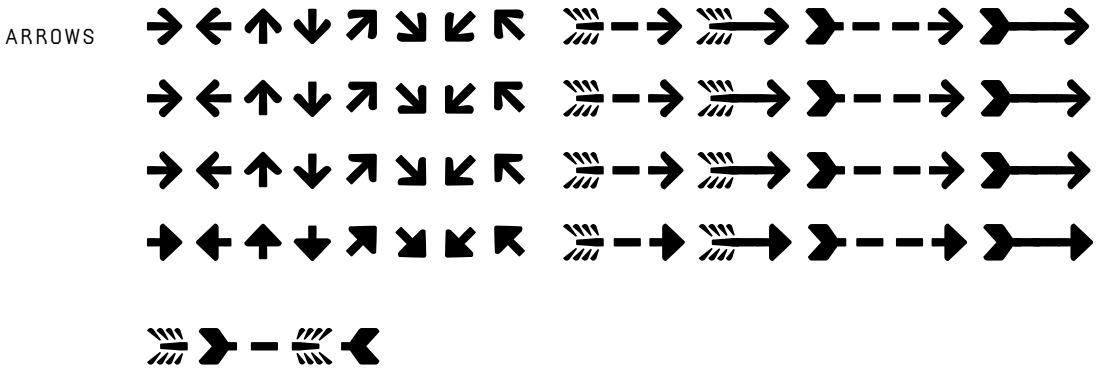
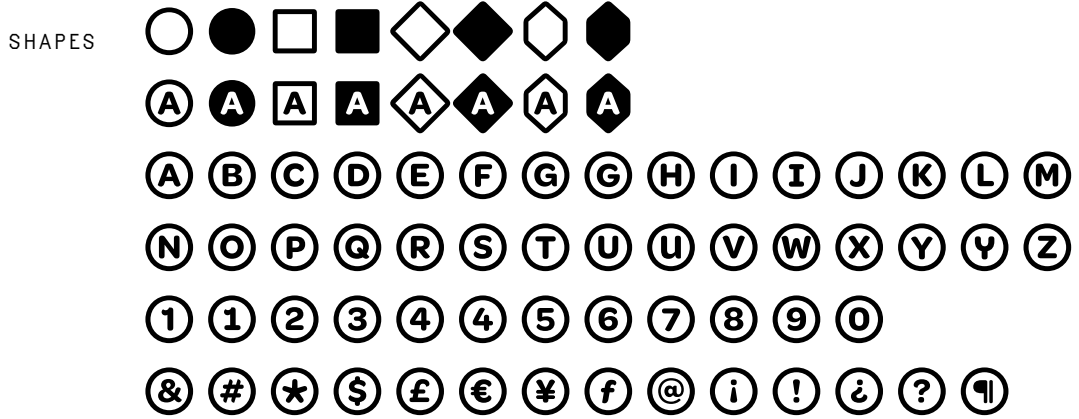
CURRENCY SYMBOLS **£ \$ ¢ ¥ € f**

ESS-ZET **ß**

ALTERNATES **G G I I U U Y Y  
a a g g j i y y  
1 1 4 4**

DIPHTHONGS **Æ Œ æ œ**





UPPERCASE **ABCDEFGHIJKLMN  
OPQRSTUVWXYZ**

LOWERCASE **abcdefghijklmn  
opqrstuvwxyz**

FIGURES **1234567890**

PUNCTUATION **&!¿?.,:;...•"'"",,,«»<>  
---\_ (){}[]/\ ' " ° \* @ # % %  
+ - x ÷ = < > ≤ ≥ ≠ ±**

LEGAL / REFERENCE **© ® ¢ ™ ¶ § † ‡**

CURRENCY SYMBOLS **£ \$ ¢ ¥ € f**

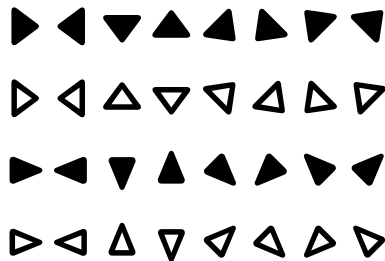
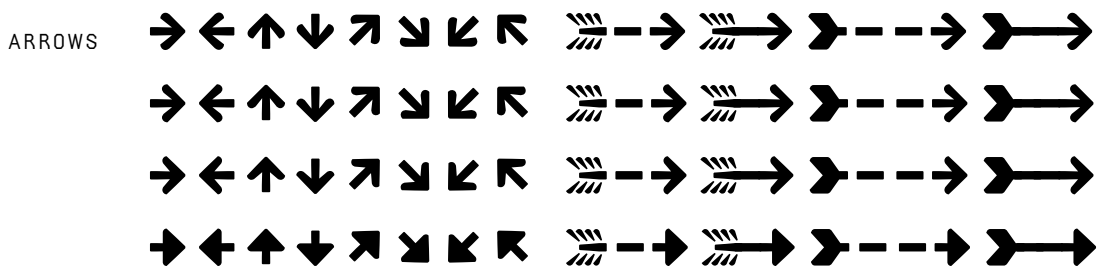
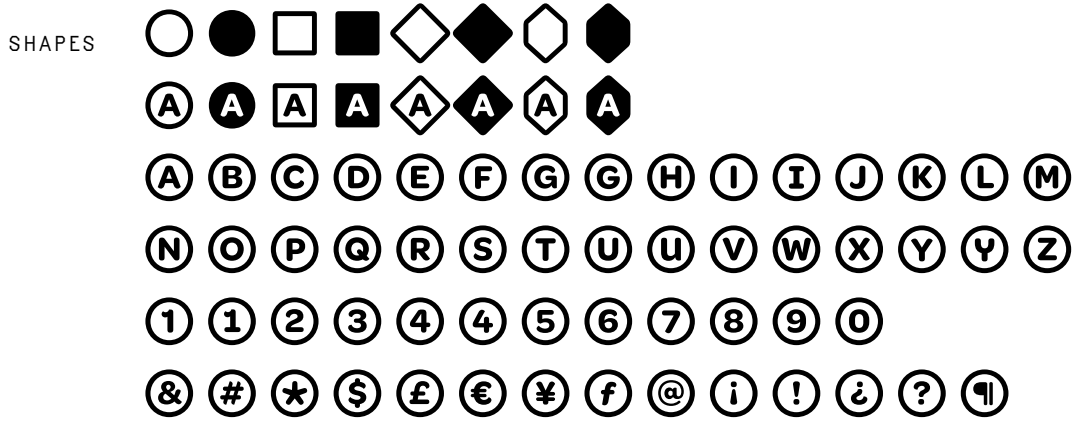
ESS-ZET **ß**

ALTERNATES **GG II UU YY  
aa gg ji yy  
11 44**

DIPHTHONGS **Æ Œ æ œ**







À Rebours Grappa Inca  
Union Yankee 1942 Melusine  
Norn Algæ Marque Platypus  
Chorine Elba Recovery Bella

**STYLISTIC SET 0 : STANDARD FORMS**

*À Rebours Grappa Inca  
Union Yankee 1942 Melusine  
Norn Algæ Marque Platypus  
Chorine Elba Recovery Bella*

À Rebours Grappa Inca  
Union Yankee 1942 Melusine  
Norn Algæ Marque Platypus  
Chorine Elba Recovery Bella

**STYLISTIC SET 1 : SCHOOLBOOK**

*À Rebours Grappa Inca  
Union Yankee 1942 Melusine  
Norn Algæ Marque Platypus  
Chorine Elba Recovery Bella*

À Rebours Grappa Inca  
Union Yankee 1942 Melusine  
Norn Algæ Marque Platypus  
Chorine Elba Recovery Bella

**STYLISTIC SET 2 : CURVY**

*À Rebours Grappa Inca  
Union Yankee 1942 Melusine  
Norn Algæ Marque Platypus  
Chorine Elba Recovery Bella*

À Rebours Grappa Inca  
Union Yankee 1942 Melusine  
Norn Algæ Marque Platypus  
Chorine Elba Recovery Bella

**STYLISTIC SET 3 : MINIMAL**

*À Rebours Grappa Inca  
Union Yankee 1942 Melusine  
Norn Algæ Marque Platypus  
Chorine Elba Recovery Bella*

À Rebours Grappa Inca  
Union Yankee 1942 Melusine  
Norn Algæ Marque Platypus  
Chorine Elba Recovery Bella

**STYLISTIC SET 4 : LEGIBLE**

*À Rebours Grappa Inca  
Union Yankee 1942 Melusine  
Norn Algæ Marque Platypus  
Chorine Elba Recovery Bella*

À Rebours Grappa Inca  
Union Yankee 1942 Melusine  
Norn Algæ Marque Platypus  
Chorine Elba Recovery Bella

**STYLISTIC SET 0 : STANDARD FORMS**

*À Rebours Grappa Inca  
Union Yankee 1942 Melusine  
Norn Algæ Marque Platypus  
Chorine Elba Recovery Bella*

À Rebours Grappa Inca  
Union Yankee 1942 Melusine  
Norn Algæ Marque Platypus  
Chorine Elba Recovery Bella

**STYLISTIC SET 1 : SCHOOLBOOK**

*À Rebours Grappa Inca  
Union Yankee 1942 Melusine  
Norn Algæ Marque Platypus  
Chorine Elba Recovery Bella*

À Rebours Grappa Inca  
Union Yankee 1942 Melusine  
Norn Algæ Marque Platypus  
Chorine Elba Recovery Bella

**STYLISTIC SET 2 : CURVY**

*À Rebours Grappa Inca  
Union Yankee 1942 Melusine  
Norn Algæ Marque Platypus  
Chorine Elba Recovery Bella*

À Rebours Grappa Inca  
Union Yankee 1942 Melusine  
Norn Algæ Marque Platypus  
Chorine Elba Recovery Bella

**STYLISTIC SET 3 : MINIMAL**

*À Rebours Grappa Inca  
Union Yankee 1942 Melusine  
Norn Algæ Marque Platypus  
Chorine Elba Recovery Bella*

À Rebours Grappa Inca  
Union Yankee 1942 Melusine  
Norn Algæ Marque Platypus  
Chorine Elba Recovery Bella

**STYLISTIC SET 4 : LEGIBLE**

*À Rebours Grappa Inca  
Union Yankee 1942 Melusine  
Norn Algæ Marque Platypus  
Chorine Elba Recovery Bella*

À Rebours Grappa Inca  
Union Yankee 1942 Melusine  
Norn Algæ Marque Platypus  
Chorine Elba Recovery Bella

STYLISTIC SET 0 : STANDARD FORMS

*À Rebours Grappa Inca  
Union Yankee 1942 Melusine  
Norn Algæ Marque Platypus  
Chorine Elba Recovery Bella*

À Rebours Grappa Inca  
Union Yankee 1942 Melusine  
Norn Algæ Marque Platypus  
Chorine Elba Recovery Bella

STYLISTIC SET 1 : SCHOOLBOOK

*À Rebours Grappa Inca  
Union Yankee 1942 Melusine  
Norn Algæ Marque Platypus  
Chorine Elba Recovery Bella*

À Rebours Grappa Inca  
Union Yankee 1942 Melusine  
Norn Algæ Marque Platypus  
Chorine Elba Recovery Bella

STYLISTIC SET 2 : CURVY

*À Rebours Grappa Inca  
Union Yankee 1942 Melusine  
Norn Algæ Marque Platypus  
Chorine Elba Recovery Bella*

À Rebours Grappa Inca  
Union Yankee 1942 Melusine  
Norn Algæ Marque Platypus  
Chorine Elba Recovery Bella

STYLISTIC SET 3 : MINIMAL

*À Rebours Grappa Inca  
Union Yankee 1942 Melusine  
Norn Algæ Marque Platypus  
Chorine Elba Recovery Bella*

À Rebours Grappa Inca  
Union Yankee 1942 Melusine  
Norn Algæ Marque Platypus  
Chorine Elba Recovery Bella

STYLISTIC SET 4 : LEGIBLE

*À Rebours Grappa Inca  
Union Yankee 1942 Melusine  
Norn Algæ Marque Platypus  
Chorine Elba Recovery Bella*

À Rebours Grappa Inca  
Union Yankee 1942 Melusine  
Norn Algæ Marque Platypus  
Chorine Elba Recovery Bella

STYLISTIC SET 0 : STANDARD FORMS

*À Rebours Grappa Inca  
Union Yankee 1942 Melusine  
Norn Algæ Marque Platypus  
Chorine Elba Recovery Bella*

À Rebours Grappa Inca  
Union Yankee 1942 Melusine  
Norn Algæ Marque Platypus  
Chorine Elba Recovery Bella

STYLISTIC SET 1 : SCHOOLBOOK

*À Rebours Grappa Inca  
Union Yankee 1942 Melusine  
Norn Algæ Marque Platypus  
Chorine Elba Recovery Bella*

À Rebours Grappa Inca  
Union Yankee 1942 Melusine  
Norn Algæ Marque Platypus  
Chorine Elba Recovery Bella

STYLISTIC SET 2 : CURVY

*À Rebours Grappa Inca  
Union Yankee 1942 Melusine  
Norn Algæ Marque Platypus  
Chorine Elba Recovery Bella*

À Rebours Grappa Inca  
Union Yankee 1942 Me-  
lusine Norn Algæ Marque  
Platypus Chorine Elba Re-

STYLISTIC SET 3 : MINIMAL

*À Rebours Grappa Inca  
Union Yankee 1942 Melusine  
Norn Algæ Marque Platypus  
Chorine Elba Recovery Bella*

À Rebours Grappa Inca  
Union Yankee 1942 Melusine  
Norn Algæ Marque Platypus  
Chorine Elba Recovery Bella

STYLISTIC SET 4 : LEGIBLE

*À Rebours Grappa Inca  
Union Yankee 1942 Melusine  
Norn Algæ Marque Platypus  
Chorine Elba Recovery Bella*

À Rebours Grappa Inca  
Union Yankee 1942 Melusine  
Norn Algæ Marque Platypus  
Chorine Elba Recovery Bella

*À Rebours Grappa Inca  
Union Yankee 1942 Melusine  
Norn Algæ Marque Platypus  
Chorine Elba Recovery Bella*

STYLISTIC SET 0 : STANDARD FORMS

À Rebours Grappa Inca  
Union Yankee 1942 Melusine  
Norn Algæ Marque Platypus  
Chorine Elba Recovery Bella

*À Rebours Grappa Inca  
Union Yankee 1942 Melusine  
Norn Algæ Marque Platypus  
Chorine Elba Recovery Bella*

STYLISTIC SET 1 : SCHOOLBOOK

À Rebours Grappa Inca  
Union Yankee 1942 Melusine  
Norn Algæ Marque Platypus  
Chorine Elba Recovery Bella

*À Rebours Grappa Inca  
Union Yankee 1942 Melusine  
Norn Algæ Marque Platypus  
Chorine Elba Recovery Bella*

STYLISTIC SET 2 : CURVY

À Rebours Grappa Inca  
Union Yankee 1942 Me-  
lusine Norn Algæ Marque  
Platypus Chorine Elba Re-

*À Rebours Grappa Inca  
Union Yankee 1942 Melusine  
Norn Algæ Marque Platypus  
Chorine Elba Recovery Bella*

STYLISTIC SET 3 : MINIMAL

À Rebours Grappa Inca  
Union Yankee 1942 Me-  
lusine Norn Algæ Marque  
Platypus Chorine Elba Re-

*À Rebours Grappa Inca  
Union Yankee 1942 Melusine  
Norn Algæ Marque Platypus  
Chorine Elba Recovery Bella*

STYLISTIC SET 4 : LEGIBLE

À Rebours Grappa Inca  
Union Yankee 1942 Me-  
lusine Norn Algæ Marque  
Platypus Chorine Elba Re-

STYLISTIC SET 0 : STANDARD FORMS

*À Rebours Grappa Inca  
Union Yankee 1942 Me-  
lusine Norn Algæ Marque  
Platypus Chorine Elba Re-*

À Rebours Grappa Inca  
Union Yankee 1942 Me-  
lusine Norn Algæ Marque  
Platypus Chorine Elba Re-

STYLISTIC SET 1 : SCHOOLBOOK

*À Rebours Grappa Inca  
Union Yankee 1942 Me-  
lusine Norn Algæ Marque  
Platypus Chorine Elba Re-*

À Rebours Grappa Inca  
Union Yankee 1942 Me-  
lusine Norn Algæ Marque  
Platypus Chorine Elba Re-

STYLISTIC SET 2 : CURVY

*À Rebours Grappa Inca  
Union Yankee 1942 Me-  
lusine Norn Algæ Marque  
Platypus Chorine Elba Re-*

À Rebours Grappa Inca  
Union Yankee 1942 Me-  
lusine Norn Algæ Marque  
Platypus Chorine Elba Re-

STYLISTIC SET 3 : MINIMAL

*À Rebours Grappa Inca  
Union Yankee 1942 Me-  
lusine Norn Algæ Marque  
Platypus Chorine Elba Re-*

À Rebours Grappa Inca  
Union Yankee 1942 Me-  
lusine Norn Algæ Marque  
Platypus Chorine Elba Re-

STYLISTIC SET 4 : LEGIBLE

*À Rebours Grappa Inca  
Union Yankee 1942 Me-  
lusine Norn Algæ Marque  
Platypus Chorine Elba Re-*

**À Rebours Grappa Inca  
Union Yankee 1942 Me-  
lusine Norn Algæ Marque  
Platypus Chorine Elba Re-**

STYLISTIC SET 0 : STANDARD FORMS

*À Rebours Grappa Inca  
Union Yankee 1942 Me-  
lusine Norn Algæ Marque  
Platypus Chorine Elba Re-*

**À Rebours Grappa Inca  
Union Yankee 1942 Me-  
lusine Norn Algæ Marque  
Platypus Chorine Elba Re-**

STYLISTIC SET 1 : SCHOOLBOOK

*À Rebours Grappa Inca  
Union Yankee 1942 Me-  
lusine Norn Algæ Marque  
Platypus Chorine Elba Re-*

**À Rebours Grappa Inca  
Union Yankee 1942 Me-  
lusine Norn Algæ Marque  
Platypus Chorine Elba Re-**

STYLISTIC SET 2 : CURVY

*À Rebours Grappa Inca  
Union Yankee 1942 Me-  
lusine Norn Algæ Marque  
Platypus Chorine Elba Re-*

**À Rebours Grappa Inca  
Union Yankee 1942 Me-  
lusine Norn Algæ Marque  
Platypus Chorine Elba Re-**

STYLISTIC SET 3 : MINIMAL

*À Rebours Grappa Inca  
Union Yankee 1942 Me-  
lusine Norn Algæ Marque  
Platypus Chorine Elba Re-*

**À Rebours Grappa Inca  
Union Yankee 1942 Me-  
lusine Norn Algæ Marque  
Platypus Chorine Elba Re-**

STYLISTIC SET 4 : LEGIBLE

*À Rebours Grappa Inca  
Union Yankee 1942 Me-  
lusine Norn Algæ Marque  
Platypus Chorine Elba Re-*



**À Rebours Grappa Inca  
Union Yankee 1942 Me-  
lusine Norn Algæ Marque  
Platypus Chorine Elba**

STYLISTIC SET 0 : STANDARD FORMS

***À Rebours Grappa Inca  
Union Yankee 1942 Me-  
lusine Norn Algæ Marque  
Platypus Chorine Elba***

**À Rebours Grappa Inca  
Union Yankee 1942 Me-  
lusine Norn Algæ Marque  
Platypus Chorine Elba**

STYLISTIC SET 1 : SCHOOLBOOK

***À Rebours Grappa Inca  
Union Yankee 1942 Me-  
lusine Norn Algæ Marque  
Platypus Chorine Elba***

**À Rebours Grappa Inca  
Union Yankee 1942 Me-  
lusine Norn Algæ Marque  
Platypus Chorine Elba**

STYLISTIC SET 2 : CURVY

***À Rebours Grappa Inca  
Union Yankee 1942 Me-  
lusine Norn Algæ Marque  
Platypus Chorine Elba***

**À Rebours Grappa Inca  
Union Yankee 1942 Me-  
lusine Norn Algæ Marque  
Platypus Chorine Elba**

STYLISTIC SET 3 : MINIMAL

***À Rebours Grappa Inca  
Union Yankee 1942 Me-  
lusine Norn Algæ Marque  
Platypus Chorine Elba***

**À Rebours Grappa Inca  
Union Yankee 1942 Me-  
lusine Norn Algæ Marque  
Platypus Chorine Elba**

STYLISTIC SET 4 : LEGIBLE

***À Rebours Grappa Inca  
Union Yankee 1942 Me-  
lusine Norn Algæ Marque  
Platypus Chorine Elba***

**À Rebours Grappa  
Inca Union Yankee  
1942 Melusine Norn  
Algæ Marque Platypus**

STYLISTIC SET 0 : STANDARD FORMS

***À Rebours Grappa  
Inca Union Yankee  
1942 Melusine Norn  
Algæ Marque Platypus***

**À Rebours Grappa  
Inca Union Yankee  
1942 Melusine Norn  
Algæ Marque Platypus**

STYLISTIC SET 1 : SCHOOLBOOK

***À Rebours Grappa  
Inca Union Yankee  
1942 Melusine Norn  
Algæ Marque Platypus***

**À Rebours Grappa  
Inca Union Yankee  
1942 Melusine Norn  
Algæ Marque Platypus**

STYLISTIC SET 2 : CURVY

***À Rebours Grappa  
Inca Union Yankee  
1942 Melusine Norn  
Algæ Marque Platypus***

**À Rebours Grappa  
Inca Union Yankee  
1942 Melusine Norn  
Algæ Marque Platypus**

STYLISTIC SET 3 : MINIMAL

***À Rebours Grappa  
Inca Union Yankee  
1942 Melusine Norn  
Algæ Marque Platypus***

**À Rebours Grappa  
Inca Union Yankee  
1942 Melusine Norn  
Algæ Marque Platypus**

STYLISTIC SET 4 : LEGIBLE

***À Rebours Grappa  
Inca Union Yankee  
1942 Melusine Norn  
Algæ Marque Platypus***

BREAKS

Monthly

CONTROL

Byzantium

CHARACTERISE

Recommended

CALICO

*Novelist*

SCOTTISH

*Profession*

ARCHITECTURE

*Costermongers*

DISARM

Sceptre

DIGNIFIED

Universally

TEMPERAMENT

Narrow-minded

*PURPLE*

*Elsinore*

*CLAUDIUS*

*Revelation*

*COMMUNICATE*

*Open-mouthed*

UTOPIA

Fashion

ACADEMY

Bookseller

ENVIRONMENT

Accoutrements

BRINGS

Artemis

SCHOOLS

Madeline

HAMMERSMITH

Ornamentation



INDIGO

Mingled

CREATIVE

Patriotism

EXTRAVAGANT

Reconstruction

GUILDS

*Rivulets*

SOLSTICE

*Mediaeval*

CONNOISSEUR

*Psychologically*

DUTCH  
Portrait  
EPIDEMIC  
Biography  
ABERCROMBIE  
Nonconformist

QUEEN

Novelty

STRANGE

Platitudes

INEXPERIENCE

Washerwoman

SINFUL

Escape

GESTURE

Rousseau

SIGNIFICANCE

Rose-coloured

*LIZARD*

*Plumes*

*SUPREME*

*Odysseus*

*MATHEMATICS*

*Contemplative*

**FRONT**  
**Author**  
**ORATION**  
**Peacocks**  
**MAGNIFICENT**  
**Achievements**

***SERIES***

***Bubble***

***MILLINER***

***Essayists***

***TOUCHSTONE***

***Qualifications***



**STOUT**

**Dinner**

**HOLBEIN**

**Absolute**

**MARVELLOUS**

**Improvement**

***MILIEU***

***Comus***

***PORTICO***

***Archway***

***SPIRITUALISE***

***Subordinates***

**FERNS**

**Dazzle**

**FINGERS**

**Complex**

**ENGLISHMAN**

**Scientifically**

**LOVER**

***Portia***

**PIERROT**

***Emerald***

**GLOUCESTER**

***Bonaventure***